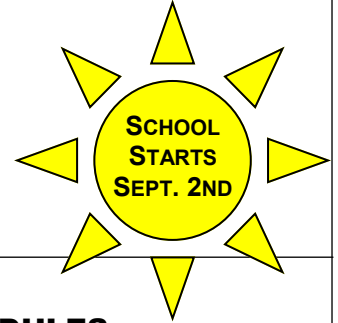




# MARY WALKER

## SCHOOL DISTRICT No. 207



### MARK YOUR CALENDAR

#### August

- 13th: High School Fall Sports ~ Parent Meeting (6:00pm; location TBD)
- 17th: Pre-School thru 8th Grade Registration Begins
- 19th: High School Football ~ 1st Practice (see schedule on pg. 15)
- 19th - 21st: High School Registration (9:00am - 3:00pm)
- 24th: High School Volleyball ~ 1st Practice (9:00am)
- 27th: Open House (5:00pm - 6:00pm Dinner in the Cafeteria; 6:00pm - 7:00pm Classroom Visits)

#### September

- 1st: Staff Orientation ~ No School
- 2nd: First Day of School (Kindergarten thru 12th Grade)
- 7th: No School ~ Labor Day
- 14th: First Day of School (Pre-School)

#### October

- 8th: No School ~ In-Service/PREP Day

#### November

- 4th: First Quarter Ends
- 11th: No School ~ Veteran's Day
- 23rd - 25th: Early Release ~ Conferences
- 26th - 27th: No School ~ Thanksgiving Break

#### December

- 21st - January 1st: No School ~ Winter Break (classes resume Jan. 4th)

***Please Note:*** All schedules are accurate at the time of this printing, but are subject to change.

### REGISTRATION SCHEDULES

#### Pre-School

Mary Walker's Pre-School will again be offered free to youngsters ages 3 - 5 who have identified disabilities; other students can also attend, for a small monthly fee. Please call the Elementary School office (258-7357) for more information, or if you have questions. Testing will begin when school starts.

#### Kindergarten - 8th Grade

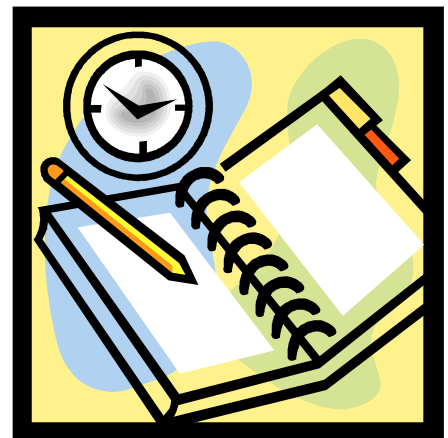
Registration for new students in Springdale Elementary / Middle School (Kindergarten through 8th Grade) will begin Mon., August 17th in the Elementary / Middle School office. Returning students do not need to re-register.

Students registering for Kindergarten must be 5-years-old on or before August 31, 2015, and the parent or legal guardian will need to bring current immunization information and a birth certificate, or other legal proof of age, for each new student. Returning students must update registration information and immunization information. Any student entering 6th Grade is required by law to have a second MMR immunization and will need to bring proof of such immunization.

#### 9th - 12th Grade

Mary Walker High School will be hosting student registration for Fall classes for in-coming students on August 19th, 20th and 21st (9:00am - 3:00pm).

**Students must be accompanied by a parent/guardian to sign the class schedules and update any registration information, such as immunization records, etc.** There will be some classes that fill up quicker than others, so it is important that ALL students register on these days!



## ALTERNATIVE SCHOOL

The Alternative School is designed to provide a High School diploma to anyone under the age of 21 who cannot, for various reasons, complete the normal High School program. Students wishing to enroll in Mary Walker's Alternative High School should call the High School office (258-4533) for more information.

## STUDENT TRANSFERS

**Students transferring into, or out of, the school district must apply to do so before the start of school.** "By law, Washington schools cannot accept students who are not residents, nor transfer students who are not residents, without necessary paperwork being completed," according to Supt. Kevin Jacka. "Parents should file these papers as soon as possible." Visit our web site or call the District Office (258-4534) for additional information. **Note: Transfers are valid for one school year only, so a new application must be completed each year, for each student.**



## PRE-SCHOOL SCREENING

If you have concerns about your Pre-School child's development, Mary Walker School District provides free developmental screenings in the areas of speech, language, motor skills, hearing, social and learning skills. We provide Pre-School and other therapies at no charge for children between the ages of birth to 5-years-old who qualify as being developmentally delayed. To schedule a screening for a child between these ages (birth to 5-years-old), call Mary Walker School District and leave your name and number; you will be contacted after school starts in the Fall. After school starts, contact Edwina Hargrave (258-4726) or Melinda Colvin (258-4780).

## SPECIAL EDUCATION PARENT INFORMATION TABLE (TITLE I / IDEA-B)

Mary Walker School District's Special Education Department, as part of the District's "Special Education Policies and Procedures," hosts a "Parent Information" table now located in the Elementary School building, just inside Room 74. As before, and according to law, "Any application and any required policies, procedures, evaluations, plans, and reports will be made readily available to parents and other members of the general public through the District's Special Education Department and Superintendent offices."

All parents are invited to review information related to the identification of students with disabilities in need of special services. Information is included on specific disabilities, on agency and parent support groups, and on trainings available to parents and educators. Also included for your review are Mary Walker's Special Education Policy and Procedures, Washington State's Rules for the Provision of Special Education to Special Education Students (Chapter 392-172 WAC), Notice of Procedural Safeguards for Special Education Students and Their Families, Consolidated Program Review from the Office of the Superintendent of Public Instruction (2001), and Federal Fund Grant Applications for Special Education IDEA-B and Section 619 Funding.

Also, parents may review information regarding "The Family Educational Rights and Privacy Act (FERPA)" and "The Health Insurance Portability and Accountability Act (HIPAA)" as those policies relate to student records.

The Special Education Department embraces an open door, "Public Participation" policy (page 24 of the Special Education Policies and Procedures manual), and encourages parents, at anytime, to provide input and planning ideas to the Special Education Director with the goal of improving the effectiveness of the Special Education program. Any parent can set-up a meeting with the Special Education Director, Edwina Hargrave (258-4726) to: refer any student for a special education evaluation; have any question(s) answered; review any application or procedure; or to provide an opinion or suggestion as to how to improve the effectiveness of the Special Education program.

## **SPECIAL EDUCATION SERVICES TO INCLUDE INFANTS AND TODDLERS**

Beginning in September of 2009, Mary Walker School District, along with all other districts in Washington State, began participating in early intervention services for infants and toddlers who have disabilities. The law now requires the Special Education Department to expand its search for children (“Childfind”) with disabilities to include birth to 3-years-old, referred to as Part C under the Federal “Individuals with Disabilities Education Act” (IDEA). Previously, districts were only required to identify and serve children with disabilities ages 3 through 21, referred to as Part B under IDEA.

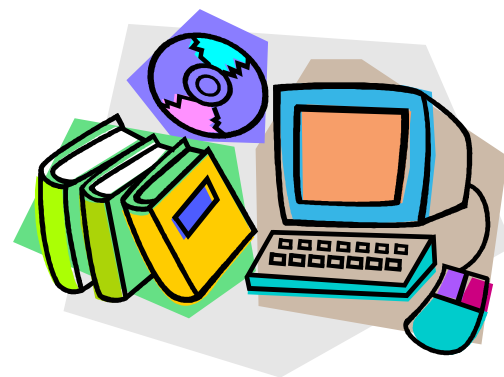
Part B has required school districts to identify, assess and provide “Free Appropriate Public Education (FAPE)” to children who may qualify under one of several categories, including: developmental delay, mental retardation, hearing impairment, speech or language impairment, traumatic brain injury, specific learning disability, autism, emotional-behavioral disorder and others. Services can include: speech-language therapy, physical therapy, specialized instruction directed by a certified Special Education teacher, and other services and accommodations deemed necessary by the Individualized Education Program (IEP) team, which includes the parents.

Part C does not require the districts to be the sole provider of services or to provide FAPE, as in Part B. It does, however, require district Special Education personnel to work with the County’s Family Resource Coordinator (FRC), whose responsibility it is to see that families and providers work together. Children in this age bracket, birth to 3-years-old, have an Individual Family Services Plan (IFSP) rather than an IEP. Required services are not only paid for by State Special Education funding, similar to Part B, but also through the family’s private insurance, Medicaid when the child is eligible, or some other funding source coordinated by the FRC.

Anyone can now refer any child suspected of a developmental delay or other disability, ages birth through 21-years-old, for evaluation to Mary Walker School District’s Special Education Department. Contact Edwina Hargrave, Special Education Director (258-4726) Melinda Colvin, the Special Education Department’s Administrative Assistant (258-7357), or our School Psychologist (258-7357) for assistance.

## **ALTERNATIVE LEARNING EDUCATION (ALE)**

Mary Walker School District No. 207 offers home-based ALE programs — Mary Walker Parent Partnership Programs (MWPPP and DEC-MWPPP) and Springdale Academy — which are K-12 resource options designed by local parents with MWSD to supplement and enrich the home-based school experience. These programs recognize the parent as the primary teacher, working with enrolled families to provide resources and workshops that may not be readily accessible from the home. The workshops will often utilize the talents of local or surrounding area experts to provide stimulating learning experiences for the home-based ALE students. For more information about these programs, please call MWPPP and DEC-MWPPP (258-7342) or Springdale Academy (937-2224).



## **HOME-BASED INSTRUCTION**

**In compliance with Washington State law, parents providing home-based instruction to their children must file a statement annually with their local school district.** Forms are available at the District Office and on our web site.

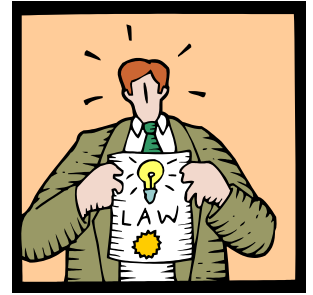
**The statement must be filed by September 15, 2015, or within two weeks of the beginning of the school quarter, trimester or semester.** It should include the name and grade of the child being home-schooled and whether or not the home-based instruction will be supervised by someone with a teaching certificate. Parents living in this school district can file the annual statement with the District Office weekdays between the hours of 8:00am and 4:00pm.

## **PARENT'S RIGHT TO KNOW**

Springdale Elementary and Middle Schools are school-wide Title I schools. Parents of children in Title I schools may request information about the qualifications of their child's teachers.

The following information may be provided to parents upon request:

- State qualification and licensing requirements for grade levels and subject areas.
- Emergency or other provisional status where licensing criteria is waived.
- Baccalaureate degree major and any other graduate certification or degree.
- In addition, if services are provided to the child by a para-educator, parents may be informed if he/she is 'Highly Qualified' according to NCLB regulation.



## **CHILDFIND**

Mary Walker School District provides many programs at no cost. We offer special programs such as speech therapy, physical therapy, Title I, LAP, Special Education, academic programs and Pre-School classes to children at least 3-years-old. Developmental screenings and/or comprehensive assessments for children who are suspected of having a disability are also available at no cost for persons up to 21-years-old. For further information, contact our Special Education Department (258-7357).

## **MCKINNEY VENTO ACT (HOMELESS / MIGRANT STUDENTS)**

Mary Walker School District, and all school districts in Stevens County, WA, will have programs to assist homeless and migrant worker students and their families. The program's purpose is to help these students to be successful in school and reduce the barriers to enrollment in school. Homeless students include children living in homeless shelters, any student who does not have a steady place of residence (or lives in a temporary residence), those living in inadequate housing, and/or students who are runaways or throwaways. Migrant workers are defined as any students who travel out of the area to work. If you are interested in receiving more information about this program, please contact the Springdale Elementary / Middle School (258-7357).

## **NON-DISCRIMINATION (TITLE IX / 504 / ADA)**

Mary Walker School District No. 207 (Springdale, WA) is an equal employment opportunity employer and does not discriminate in any programs or activities or against any employee on the basis sex, race, creed, religion, color, national origin, age, veteran or military status, sexual orientation, gender expression or identity, disability, or the use of a trained dog guide or service animal and provides equal access to the Boy Scouts and other designated youth groups. This holds true for all students who are interested in participation in educational programs and/or extracurricular school activities. Inquiries regarding compliance and/or grievance procedures should be directed to the District's Title IX / RCW28A.640 Officer, Jerry Dyar (258-4717) and/or Section 504 / ADA Coordinator, Scott Schell (258-7357).

## **DRUG-FREE WORKPLACE**

Mary Walker School District No. 207 recognizes its responsibility to maintain a drug-free workplace; therefore, no employee engaged in work shall unlawfully manufacture, distribute, dispense, possess or use on or in any district building, premises, assigned work location, vehicle, or activity, any narcotic drug, hallucinogenic drug, amphetamine, barbiturate, marijuana, and/or any other controlled substance or alcohol.

Each employee shall abide by the terms of this policy respecting a drug-free workplace. Any employee who violates the terms of this policy may be suspended, discharged or non-renewed in accordance with the provisions of board policy and State law. An employee may be required to satisfactorily complete a drug rehabilitation or treatment program approved by the Superintendent (or designee), at the employee's expense. Nothing in this policy shall be construed to guarantee reinstatement of any employee who violates this policy, nor does Mary Walker School District incur any financial obligation for treatment or rehabilitation ordered as a condition of reinstatement.

## **NOTIFICATION OF RIGHTS UNDER THE FAMILY EDUCATIONAL RIGHTS AND PRIVACY ACT**

The Family Educational Rights and Privacy Act (FERPA) (20 U.S.C. § 1232g; 34 CFR Part 99) is a Federal law that protects the privacy of student education records. The law applies to all schools that receive funds under an applicable program of the U.S. Department of Education.

FERPA gives parents certain rights with respect to their children's education records. These rights transfer to the student when he or she reaches the age of 18 or attends a school beyond the high school level. Students to whom the rights have transferred are "eligible students."

- Parents or eligible students have the right to inspect and review the student's education records maintained by the school. Schools are not required to provide copies of records unless, for reasons such as great distance, it is impossible for parents or eligible students to review the records. Schools may charge a fee for copies.
- Parents or eligible students have the right to request that a school correct records which they believe to be inaccurate or misleading. If the school decides not to amend the record, the parent or eligible student then has the right to a formal hearing. After the hearing, if the school still decides not to amend the record, the parent or eligible student has the right to place a statement with the record setting forth his or her view about the contested information.
- Generally, schools must have written permission from the parent or eligible student in order to release any information from a student's education record. However, FERPA allows schools to disclose those records, without consent, to the following parties or under the following conditions (34 CFR § 99.31):
  - ◊ School officials with legitimate educational interest;
  - ◊ Other schools to which a student is transferring;
  - ◊ Specified officials for audit or evaluation purposes;
  - ◊ Appropriate parties in connection with financial aid to a student;
  - ◊ Organizations conducting certain studies for or on behalf of the school;
  - ◊ Accrediting organizations;
  - ◊ To comply with a judicial order or lawfully issued subpoena;
  - ◊ Appropriate officials in cases of health and safety emergencies; and
  - ◊ State and local authorities, within a juvenile justice system, pursuant to specific State law.

Schools may disclose, without consent, "directory" information such as a student's name, address, telephone number, date and place of birth, honors and awards, and dates of attendance. However, schools must tell parents and eligible students about directory information and allow parents and eligible students a reasonable amount of time to request that the school not disclose directory information about them. Schools must notify parents and eligible students annually of their rights under FERPA. The actual means of notification (special letter, inclusion in a PTA bulletin, student handbook, or newspaper article) is left to the discretion of each school.

For additional information, call 1-800-USA-LEARN (1-800-872-5327) (voice). Individuals who use TDD may call 1-800-437-0833.

Or, you may contact us at: Family Policy Compliance Office, U.S. Department of Education, 400 Maryland Avenue, SW, Washington, DC 20202-8520.

## **BOARD OF DIRECTORS**

District 1 ~ Edward Matherly  
District 2 ~ April Steinbach (V-Chair)  
District 3 ~ Kimberley Stricker  
District 4 ~ Justyn Turner (Chair)  
District 5 ~ Diana Beckman

## **ADMINISTRATORS**

Kevin Jacka, Superintendent  
Matthew Cobb, 6th-12th Principal  
Edwina Hargrave, PreK-5th Principal  
& Special Education Director

## **SCHOOLS**

### **SPRINGDALE ELEMENTARY / MIDDLE SCHOOL**

Tammy Ward, Pre-K-8th Office Mgr.  
& District Registrar  
Phone: 258-7357

### **MARY WALKER HIGH SCHOOL**

Donna Hutchinson, HS Office Mgr.  
& Student Records  
Phone: 258-4533

## **DISTRICT OFFICE**

Susan McIsaac, Business Mgr.  
Tina Holsten, District Secretary  
Margaret Farmer, Accounting Tech.  
Phone: 258-4534

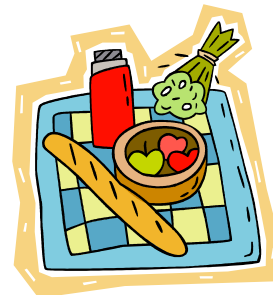
## **YOU'RE INVITED!**

The Mary Walker School District's Board of Directors meet in regular monthly meetings on the third Monday of each month, beginning at 6:30pm in the High School Library. From time to time, Special Meetings are also required to conduct the District's business — notice of these Special Meetings are typically published in *The Chevelab Independent* and posted on our web site, Facebook page and in local establishments. Interested patrons, parents, students and teachers are encouraged to attend all meetings.



## STUDENTS CONTINUE TO EAT FREE IN 2015-2016

Once again, all enrolled Mary Walker School District (MWSD) students will eat for free this school year! As you may recall, we were approved by the State of Washington for "Provisional 2" — which means free breakfast and lunch meals for all District students, regardless of family income! Extra milk, "second meal", extra juice, etc., will continue to be available to students for an additional charge.



The breakfast and lunch meals meeting USDA requirements will once again be offered free to each enrolled student from the first day of school. Since the District met the State's criteria for Provisional 2 for the 2011-2012 school year, and has since applied for and received an extension, we are able to continue to provide free meals to students — through the 2018-2019 school year — all without the need to submit applications!

Our District follows the nutritional guidelines set forth by Federal and State agencies. Mary Walker School District's new Cafeteria Supervisor, Danielle Veach, will strive to continue providing students with nutritious and delicious breakfast and lunch offerings.

The monthly meal menu will continue to be available at the school offices so that parents can plan their child(ren)'s meal choices. The current month's lunch offerings can also be found online by visiting our web site's calendar. If you have any questions, please contact the MWSD Cafeteria (258-4731). **Please be sure to notify the School Nurse and our new Cafeteria Supervisor of any food allergy your child suffers from.**

## TRANSPORTATION INFORMATION



Bus scheduling has undergone some changes this year. Families affected by any route changes will be notified directly by the District's Transportation Department. Regardless of changes, buses and drivers will be ready to transport students beginning the morning of September 2nd.

**Remember:** Every Monday (starting September 14th) there will be a 1-Hour Late Start, unless otherwise noted.

In the event of severe weather conditions, buses may run late or (on rare occasions) not at all, due to school closure. For schedule changes during bad weather, please tune into one of the following radio stations for announcements District-wide:

<u>Radio:</u>	KZZU 93 FM	KISS 98.9 FM	<u>Television:</u>	ABC
	KDRK 93.7 FM	KXLY 99.9 FM (902 AM)		CBS
	KIX 96 FM	KEYF 101.1 FM		NBC

If you have any concerns or questions regarding busing, please contact the MWSD Transportation Supervisor, Steve Thams (258-9041).

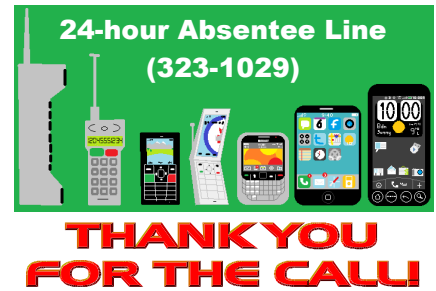
## VISITOR CHECK-IN

The administration and staff of the Mary Walker School District encourage you to visit our schools to see all the fun and exciting things we are doing. A gentle reminder, however, all **visitor's are required to check-in** at the office when entering any of the District's school buildings. This is a safety precaution for the protection of students and staff. You may be asked to wear a Visitor's Pass to confirm to school staff that you have indeed checked-in. Your cooperation is appreciated as we all work together to assure a safe environment for our students.



## STUDENT ATTENDANCE

Regular school attendance is vital to your child's academic success. But what about those times when your child is unable to attend due to health reasons, doctor or dentist appointments or family emergencies? The schools ask that you assist them by please calling the District's Absentee Line to report and excuse your child's absence. The main concern is for your child's safety, and by communicating with the school, everyone can be assured that your child is accounted for and safe.



So, the next time your child is unable to attend school, please take a moment to call the 24-hour Absentee Line (323-1029). Just leave a brief message explaining your child's absence ... that's all there is to it. Your support is greatly appreciated!

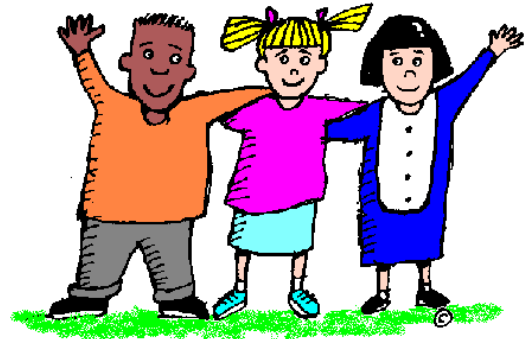
## MARY WALKER HIGH SCHOOL DRESS CODE

The 'business' of school is education, and proper dress is an important responsibility we all must accept. The aim is not conformity, but good taste. Wearing clean clothes, neatly, is a reflection on your character and on the school. Student dress and personal appearance should not disrupt or distract from the learning environment.

**Students who violate the dress code will not be allowed to attend classes until their apparel conforms to school standards.**

The following items are **not** allowed:

- Skintight (**form revealing**), sagging, low-cut, suggestive see-through, or revealing clothing.
- Bare midriff tops (**no midriff should be seen while standing or in the sitting posture**) or short skirts/shorts (**no more than 5" measured above mid-knee when kneeling**). Note: Exception may be made for school athletic uniforms (i.e., cheerleading).
- Clothing or hats with writing and/or graphics that are obscene, profane or suggestive, indecent slogans, pictures that show violence or drug-related characters, or advertising alcohol, drugs or tobacco, are prohibited. Hats are not allowed to be worn in the classroom during school hours or during cafeteria use. Hats are not allowed during school assemblies in the gym or auditorium. Hats may be worn in the hallways during school hours and outdoors.
- Chains or other potentially dangerous items.
- Any gang-related clothing or symbols (i.e., bandanas, colors, etc.).
- Headgear (i.e., hats, caps, headbands, bandanas, hairnets, dew-rags, etc.) and sunglasses are not to be worn in class.
- Sleeveless muscle shirts, fishnet shirts, tank tops, spaghetti straps (**all sleeveless shirts must have 'four-finger' width at the shoulder**), bike shorts, sleepwear, or undergarments.
- No sleepwear (i.e., flannel pajama pants, slippers, etc.).
- Any other attire or grooming that is perceived by the administration as being detrimental to the educational process will not be allowed (colored hair, face glitter, etc.).



## STUDENT INSURANCE

Student insurance information is made available in the school enrollment packets provided to each student every year. In addition, enrollment forms are also available on the counters in each school building's office.

## SUPPLIES LISTS\*

### Springdale Elementary School:

The supplies lists vary by teacher and grade level. You should receive a "Back to School" note from your child's teacher before the start of the school year. Information packets are also available in the Elementary School office. However, if you have any questions, please contact the Elementary School for more information (258-7357).

**Springdale Middle School** students need the following supplies:

- Binder, 3-inch or larger (buy 2 while they're on sale, one for each half of the year)
- One package of 7 notebook dividers
- College-ruled paper
- 4 spiral notebooks for Science
- #2 pencils, or mechanical pencils and extra lead
- Blue or black ink pen
- One hand-held pencil sharpener (that catches the pencil shavings)
- Highlighters
- Glue stick
- 6-inch ruler
- 3x3-inch sticky/post-it style notes
- Pencil pouch to hold all items
- 6th-graders only: 3 non-spiral composition books
- Optional (but a good idea to bring): calculator, USB flash drive, colored pencils and index cards

### Mary Walker High School

students will need to begin school prepared with these items in their 3-inch binder:

#### 3-Inch Binders!

- Pencil pouch
- Pencils (2)
- Eraser
- Pens (blue / black)
- Planners
- Dividers



\* Lists may not be complete.

## 2015-2016 SCHOOL YEAR TEACHERS, ETC.

### Elementary School (Pre-School thru 5th Grade)

*Edwina Hargrave ~ Principal & Special Education Director*

Pre-School (Ages 3-5)	Kim Dixon, Dani Schurger
Kindergarten	Leslie Sulgrove, Toni Thompson
1st Grade	Angie Matherly, Melissa Talley
2nd Grade	Margaret Presho
3rd Grade	Jaymi Stricker, Darci Zollman
4th Grade	Harmony Ovnicek
5th Grade	Becky Gearhart
Art (3rd - 5th)	Pam Holt
Music	Daniel Watanabe
Physical Education (K - 8th)	Hugh Franks
Resource Room (K - 5th)	Carol Kennedy, Mary Sulgrove
Speech	Nancy Danner

### Middle School (6th, 7th and 8th Grade)

*Matthew Cobb, Principal*

6th Grade/AVID (6th - 8th)	Mark Edwards
Art	Pam Holt
Language Arts	Wendy Peone
Mathematics	Jo Moss
Music	Daniel Watanabe
Physical Education	Hugh Franks
Resource Room	Carol Kennedy, Mary Sulgrove
Science	Vince Moeller
Social Studies	Rick Johnson
Special Education	Lonnie Rickey

### High School (9th thru 12th Grade)

*Matthew Cobb, Principal*

Algebra/AP English/Voc. Ed.	Haikoush Rainey
Alt. HS/Drama/English/Spanish	Gail Shelton
Art	Pam Holt
Business Education	Mike Bettinson
History/AVID	Kyle Dodge
Mathematics	Mic Kohlstedt
Music	Daniel Watanabe
Physical Education	Rick Johnson, Dwayne Watts
Science	Dennis Kiefer
Social Studies	Kyle Dodge, Dwayne Watts
Special Education	Lonnie Rickey
Student Assistance Specialist/WDFY	Barbara Fincher
Vocation Agriculture	Matt Gines

*\*Information available as of July 15, 2015.*

*Teacher assignments are subject to change, without notice.*



# Mary Walker School District No. 207

## 2015- 2016 School Year Calendar

August 2015						
SU	M	TU	W	TH	F	SA
						1
2	3	4	5	6	7	8
9	10	11	12	13	14	15
16	17	18	19	20	21	22
23	24	25	26	27	28	29
30	31					

September 2015						
SU	M	TU	W	TH	F	SA
		1	2	3	4	5
6	7	8	9	10	11	12
13	14	15	16	17	18	19
20	21	22	23	24	25	26
27	28	29	30			

October 2015						
SU	M	TU	W	TH	F	SA
				1	2	3
4	5	6	7	8	9	10
11	12	13	14	15	16	17
18	19	20	21	22	23	24
25	26	27	28	29	30	31

November 2015						
SU	M	TU	W	TH	F	SA
1	2	3	4	5	6	7
8	9	10	11	12	13	14
15	16	17	18	19	20	21
22	23	24	25	26	27	28
29	30					

December 2015						
SU	M	TU	W	TH	F	SA
		1	2	3	4	5
6	7	8	9	10	11	12
13	14	15	16	17	18	19
20	21	22	23	24	25	26
27	28	29	30	31		

January 2016						
SU	M	TU	W	TH	F	SA
					1	2
3	4	5	6	7	8	9
10	11	12	13	14	15	16
17	18	19	20	21	22	23
24	25	26	27	28	29	30
31						

**August 2015**  
 19 – Football Practice Starts  
 24 – Start of Fall Sports  
 27 – Open House  
 (Dinner @ 5pm; Meet & Greet @ 6pm)

**September 2015**  
 1 – No School – Staff Orientation  
 2 – 1<sup>st</sup> Day of School  
 7 – No School – Labor Day

**October 2015**  
 5 – No School – In-Service / PREP Day

**November 2015**  
 4 – 1<sup>st</sup> Quarter Ends  
 11 – No School – Veteran's Day  
 23 – Early Release – Conferences  
 24 – Early Release – Conferences  
 25 – Early Release – Conferences  
 26 – No School – Thanksgiving Day  
 27 – No School – Thanksgiving Break

**December 2015**  
 21 – No School – Winter Break  
 22 – No School – Winter Break  
 23 – No School – Winter Break  
 24 – No School – Winter Break  
 25 – No School – Christmas Day  
 28 – No School – Winter Break  
 29 – No School – Winter Break  
 30 – No School – Winter Break  
 31 – No School – Winter Break

**January 2016**  
 1 – No School – New Year's Day  
 18 – No School – M.L. King, Jr. Day  
 22 – 1<sup>st</sup> Semester Ends  
 25 – No School – In-Service / Semester Day

**February 2016**  
 12 – No School – Snow Day  
 15 – No School – Presidents' Day

**March 2016**  
 30 – Early Release – Conferences  
 31 – Early Release – Conferences  
 30 – 3<sup>rd</sup> Quarter Ends

**April 2016**  
 1 – Early Release – Conferences  
 4 – No School – Spring Break  
 5 – No School – Spring Break  
 6 – No School – Spring Break  
 7 – No School – Spring Break  
 8 – No School – Spring Break

**May 2016**  
 30 – No School – Memorial Day

**June 2016**  
 9 – Early Release – Last Day of School

- # 1<sup>st</sup> Day / Last Day of School
- # Quarter / Semester End
- # Early Release / Conferences
- # No School: Holiday / Snow Day
- # No School: Staff Orientation / In-Service Day

February 2016						
SU	M	TU	W	TH	F	SA
	1	2	3	4	5	6
7	8	9	10	11	12	13
14	15	16	17	18	19	20
21	22	23	24	25	26	27
28	29					

March 2016						
SU	M	TU	W	TH	F	SA
		1	2	3	4	5
6	7	8	9	10	11	12
13	14	15	16	17	18	19
20	21	22	23	24	25	26
27	28	29	30	31		

April 2016						
SU	M	TU	W	TH	F	SA
					1	2
3	4	5	6	7	8	9
10	11	12	13	14	15	16
17	18	19	20	21	22	23
24	25	26	27	28	29	30

May 2016						
SU	M	TU	W	TH	F	SA
1	2	3	4	5	6	7
8	9	10	11	12	13	14
15	16	17	18	19	20	21
22	23	24	25	26	27	28
29	30	31				

June 2016						
SU	M	TU	W	TH	F	SA
		1	2	3	4	
5	6	7	8	9	10	11
12	13	14	15	16	17	18
19	20	21	22	23	24	25
26	27	28	29	30		

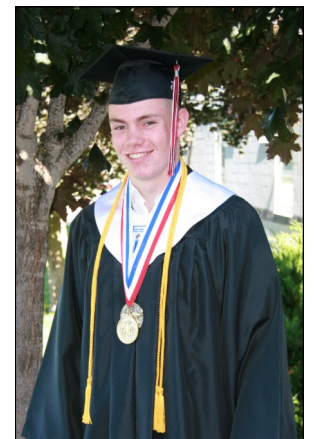
July 2016						
SU	M	TU	W	TH	F	SA
					1	2
3	4	5	6	7	8	9
10	11	12	13	14	15	16
17	18	19	20	21	22	23
24	25	26	27	28	29	30
31						





## GRADUATION

Once again, we did not publish a 2014-2015 year-end newsletter, but still wanted to share a few graduation pictures. Congratulations, Mary Walker High School Class of 2015!







**MWSD#207  
CLASS OF 2015**



# SPRINGDALE MIDDLE SCHOOL / MARY WALKER HIGH SCHOOL


## 1ST SEMESTER ~ 2015-2016

		HS Mtg. 9:15													
Monday Late Start	9:25-10:00	10:05-10:40	10:45-11:20	11:25-12:00	12:00-12:30	12:35-1:10	1:15-1:50	1:55-2:30							
Periods	1	2	3	4	Lunch	5	6	7							
Tuesday-Friday	8:25-9:13	9:18-10:06	10:11-10:59	11:04-11:52	11:52-12:32	12:37-1:25	1:30-2:18	2:23-3:11							
Bettinson	IT Academy 1 & 2	IT Academy 1 & 2 Digital Photo	Financial Math Digital Photo	Prep		Applied Math Digital Photo	Computer Repair								
Dodge	AD Period	Political Science 101	US History 101	AVID 9-10		AVID 11-12	US History								
Gines	Intro Construction & Metals	Plant Science	Metals 1 & 2	Student Leadership		Natural Resource Science	Prep								
Holt	Art	Art	Art	Prep		Weights									
Johnson						Weights									
Kiefer	Biology	Science 9	Science 9	Physics (101?)		Bio-Med	Biology								
Kohlstedt	Geometry	Math Projects	Math 101	Algebra 2		Prep	Pre-Calculus								
Rainey	Health	Foods	Prep	CRM #1		CRM#2	Algebra								
Rickey															
Shelton	English 101	AP Literature	Spanish 2	HS Drama		Spanish 1	AP Human Geography								
Watanabe	Beginning Band 6-12	Prep				Choir									
Watts	Prep	HS Guidance	World History	HS PE		HS PE	HS PE								
	English 11	English 9	English 9	English 12		Prep	English 10								
<b>6 - 8 Middle School</b>															
Bettinson															MS Computer & Business
Edwards	PREP	Avid 6th	Social Studies 6	Social Studies 6		Student Leadership	Avid 7/8								Intervention class
Franks	PE 6	PE 7	PE 8	PREP		Elementary/Adaptive PE	Elementary								Elementary
Holt						Elementary Art	MS Art								MS Art
Johnson	Social Studies 7	Keyboarding / PE	Social Studies 7	Social Studies 8		PREP	Social Studies 8								
Moeller	Science 8	Science 8	PREP	Science 6		Science 7	Science 6								Science 7
Moss	Math 8	Math 8	Math 6	Math 7		Math 6	Math 7								PREP
Peone	Language Arts 7	PREP	Language Arts 7	Language Arts 8		Language Arts 8	Language Arts 6								Language Arts 6
Shelton						Spanish 1									MS Theatre
Sulgrove															
Watanabe	Beginning Band 6-12	PREP	Elementary Music	Geography		Choir	Elementary Music								Intermediate Band 7-12

*\*Schedule subject to change, without notice.*



## 2015-2016 MARY WALKER HIGH SCHOOL GRADUATION REQUIREMENTS

Subject	Minimum state graduation requirements	Minimum requirements for your school district* MWHs	Minimum requirements for public, 4-year colleges and universities	Recommended courses for highly selective colleges and universities
<b>English</b>	3 credits	4 credits	4 years	4 years
<b>Math</b>	3 credits	3 credits	3 years	3-4 years
<b>Science</b> (one must be a lab)	2 credits	2 credits	3 years	3-4 years
<b>Social Studies</b>	3 credits	3 credits	3 years	3-4 years
<b>World language</b> (same language)	0 credits	0 credits	2 years	3-4 years
<b>Computers</b>	0 credits	1 credit	1 year	1 year
<b>Advisory</b> (.25 credits per year – must pass each semester to graduate)	0 credits	1 credit	0 credits	0 credits
<b>Visual or performing arts</b>	1 credit	1 credit	2 year	2-3 years
<b>Health and fitness</b>	2 credits	2.5 credits		
<b>Occupational education</b>	1 credit	2.5 credits		
<b>Electives</b> (4 years of Advisory equals one credit)	5.5 credits	8 credits		
<b>Total</b>	20 credits	28 credits		

Certain courses are expected to be scheduled by students at specific grade levels.

9th Grade:

Advisory  
English  
Physical Science  
Math- Alg/Geo  
Health/Fitness

10th Grade:

Advisory  
English  
Biology/Plant Science  
Math - Geo/Alg2  
Computers  
Social Studies Elective

11th Grade:

Advisory  
English  
US History  
Math(Alg2/AppMath/FinanciaMath)  
Social Studies Elective

12th Grade:

Advisory  
English  
Civics (Poli-Sci)  
Social Studies Elective



# REPORT CARD ... HOW OUR DISTRICT STACKS UP!

## MARY WALKER SCHOOL DISTRICT 207

**Superintendent:** Kevin Jacka

**6-12 Principal:** Matt Cobb

**PreK-5 Principal:** Edwina Hargrave

### School Board:

**Chair:** Justyn Turner

**Vice Chair:** April Steinbach

**Member:** Kim Stricker

**Member:** Diana Beckman

**Member:** Edward Matherly

Board meetings are held the third Monday of each month beginning at 6:30pm

The Mary Walker School District is a small Pre-K-12 district. The following gives you information about our district. If you would like further information you may find it at the OSPI website <http://reportcard.ospi.k12.wa.us/> click on the drop down menu and find the Mary Walker School District and press "go", or you may contact the Mary Walker School District.

### Teacher Information

Classroom Teachers	31
Average Years of Teacher Experience	18.2
Teachers with at least a Master's Degree	61.3%
Total number of teachers who teach core academic classes	44
% of teachers teaching with an emergency certificate	0.0%
% of teachers teaching with a conditional certificate	0.0%
Total number of core academic classes	377
<i>ESEA Highly Qualified Teacher Information</i>	
% of classes taught by teachers meeting ESEA highly qualified (HQ) definition	95.8%
% of classes taught by teachers who do not meet ESEA HQ definition	4.2%
% of classes in high poverty schools taught by teachers who meet ESEA HQ definition	93.8%
% of classes in high poverty schools taught by teachers who do not meet ESEA HQ definition	6.3%
% of classes in low poverty schools taught by teachers who meet ESEA HQ definition	97.7%
% of classes in low poverty schools taught by teachers who do not meet ESEA HQ definition	2.3%

### Enrollment

October 2013 Student Count	510
May 2014 Student Count	513

### Gender (October 2013)

Male	273	53.5%
Female	237	46.5%

### Race/Ethnicity (October 2013)

American Indian/Alaskan Native	53	10.4%
Asian	4	0.8%
Native Hawaiian / Other Pacific Islander	5	1.0%
Asian/Pacific Islander	9	1.8%
Black / African American	5	1.0%
Hispanic / Latino of any race(s)	26	5.1%
White	381	74.7%
Two or More Races	36	7.1%

### Special Programs

Free or Reduced-Price Meals (May 2014)	481	93.8%
Special Education (May 2014)	80	15.6%
Transitional Bilingual (May 2014)	0	0.0%
Migrant (May 2014)	0	0.0%
Section 504 (May 2014)	7	1.4%
Foster Care (May 2014)	9	1.8%

### Other Information ([more info](#))

Adjusted 4-Year Cohort Graduation Rate (Class of 2013)	85.5%
Adjusted 5-year Cohort Graduation Rate (Class of 2012)	72.9%

### 2013-14 MSP/HSPE Results ([Administration Info](#))

Grade Level	Reading	Math	Writing	Science
<a href="#">3rd Grade</a>	58.6%	62.0%		
<a href="#">4th Grade</a>	61.7%	44.1%	47.0%	
<a href="#">5th Grade</a>	60.6%	48.4%		66.6%
<a href="#">6th Grade</a>	52.6%	47.3%		
<a href="#">7th Grade</a>	65.7%	42.1%	60.5%	
<a href="#">8th Grade</a>	80.0%	52.0%		76.0%
<a href="#">10th Grade</a>	73.1%	See EOC below	85.7%	See EOC below



Mary Walker School District  
AYP data

Year	Identified	# Schools Identified	Date Letters Sent to Parents	Number of Eligible	Number of Students who Participated
2007-2008	No	NA	NA	NA	NA
2008-2009	Yes	1	10/1/2008	443	0
2009-2010	Yes	1	9/14/2009	547	0
2010-2011	Yes	2		354	0
2011-2012	Yes	1	8/26/11	38	1 student transferred
2014-2015	Yes	1-Step 3 1- Step 1	8/12/2014 8/12/2014	286	1 applied, 1 received supplemental services

**NAEP Detail**

National Assessment of Educational Progress  
State of Washington

	State	Nation
<b>Grade 4 Reading</b>		
Achievement Level:		
Advanced	10%	8%
Proficient	30%	26%
At Basic	33%	33%
Below Basic	28%	33%
Scale Score		
Average	225	221
<b>Grade 4 Math</b>		
Achievement Level:		
Advanced	10%	8%
Proficient	38%	34%
At Basic	38%	41%
Below Basic	14%	18%
Scale Score		
Average	246	241

**NAEP Detail Continued:**

Grade 8 Reading	State	Nation
Achievement Level		
Advanced	6%	4%
Proficient	36%	31%
At Basic	39%	42%
Below Basic	19%	23%

Grade 8 Math	State	Nation
Achievement Level		
Advanced	12%	8%
Proficient	30%	26%
At Basic	37%	39%
Below Basic	21%	27%

**CHARGER FOOTBALL**



Football practice will start on Wed., August 19th. We will have mandatory 2-a-day practices for the majority of the first week of practice days. Morning practice time will be 7:00am to 9:00am, and evening practice will be 7:00pm to 9:00pm. By practicing at these times, we will avoid the heat of the day, and those who have jobs, won't have to miss work in order to come to practice.

**FOOTBALL PRACTICE ~ MANDATORY 2-A-DAY\***

Wed., August 19th

Thurs., August 20th

Fri., August 21st

Sat., August 22nd (*\*am practice only*)

Mon., August 24th

Tues., August 25th

*7:00am to 9:00am*

*& 7:00pm to 9:00pm*

Additional information regarding parent meeting and issuance of gear has been mailed separately.

**CITIZEN COMPLAINT AGAINST A SCHOOL DISTRICT**

*(OR OTHER SCHOOL SERVICE PROVIDER)*

A citizen complaint is a written statement that alleges a violation of a federal rule, law or regulation or state regulation that applies to a federal program.

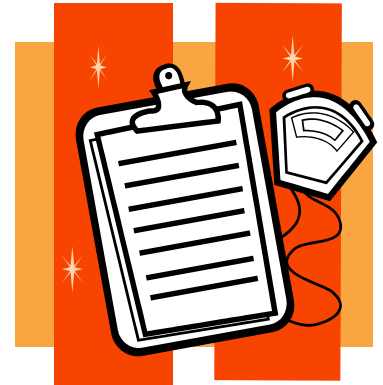
- Anyone can file a citizen complaint.
- There is no special form.
- There is no need to know the law that governs a federal program to file a complaint.

An overview of the citizen complaint process is described fully in Chapter 392-168 WAC, Special Service Programs - Citizen Complaint Procedure for Certain Categorical Federal Programs. This WAC can be found online at: <http://www.apps.leg.wa.gov/wac/default.aspx?cite=392-168>.

## IMPORTANT SPORTS INFORMATION

With summer coming to an end, it's time to start thinking about Fall Sports. Remember, before you can participate in any sport, you need to meet all the athletes' requirements for Mary Walker School District. Requirements include getting a sports physical (which are now good for two years), and completing and submitting the following paperwork: Insurance Forms, Athletic Code, Sports Guidelines, Sports Warning and your current Medical Card. All forms can be downloaded and printed from our web site.

Please contact Springdale Community Health Center (258-4234) or Loon Lake Community Health Center (233-8412) to ask about their free/and or low-fee sports physical dates and/or to schedule an appointment for a sports physical. **MWSD has been notified that Loon Lake is offering free sports physicals (by appointment only) on August 7th, and that Springdale is offering free sports physicals (again, by appointment only) on August 14th and August 18th.**



### Mary Walker High School Sports

High School Football practice will begin on August 19th this year, with Cheer, Volleyball and Cross Country practice starting dates yet to be determined. Athletes must have their paperwork completed and turned in to Donna Hutchinson at the High School office before the first practice day, or they will be unable to participate. If parents or athletes have any questions, please contact the coach of the sport they wish to participate in.

- Athletic Director: Kyle Dodge
- Cheer: LaRee White
- Cross Country: Hugh Franks, Pam Willey
- Football: Rick Johnson, Sam Aswegan, Gavin Horst
- Volleyball: Kyle Dodge



### Springdale Middle School Sports

Springdale Middle School sports practice start dates are yet to be determined. Interested athletes must have their paperwork completed and turned in to Tammy Ward at the Middle School office before the first practice day, or they will be unable to participate. If parents or athletes have any questions, please contact the coach of the sport they wish to participate in.

- Athletic Director: Kyle Dodge
- Cross Country: Hugh Franks, Pam Willey
- Football: Mike Bettinson, Tim Goad
- Volleyball: Dani Schurger, Tammy Ward

Mary Walker School District's web site strives to provide the latest information on sports, lunch menus, upcoming school events, community links and much more. Be sure to visit us soon at:

[www.marywalker.org](http://www.marywalker.org)

You can also find a link on our web site to "LIKE" our Facebook page to stay even more connected.







# FAMILY FUN SERIES

*Dinner and childcare provided at no cost!*

**Please join us for an evening of learning, sharing, and fun!  
Transportation can be provided at NO cost!**

## Youth Workshops

- Week 1: Having Goals and Dreams
- Week 2: Appreciating Parents
- Week 3: Dealing with Stress
- Week 4: Following Rules
- Week 5: Dealing with Peer Pressure
- Week 6: Peer Pressure & Good Friends
- Week 7: Reaching Out to Others



## What is Strengthening Families?

Strengthening Families is a best practice program designed just for parents/caregivers and their youth ages 10-14. We offer guided activities and lessons to help parents & children transition into their teen years.

## Parent/Caregiver Workshops

- Week 1: Practicing Love and Limits
- Week 2: Making House Rules
- Week 3: Encouraging Good Behavior
- Week 4: Using Consequences
- Week 5: Building Bridges
- Week 6: Protecting Against Substance Abuse
- Week 7: Accessing Community Resources

*Family comes together for the FAMILY SESSION at 7:00pm.*

**This program will be held every TUESDAY for seven weeks, starting on September 22<sup>nd</sup> and ending on November 3<sup>rd</sup> at Mary Walker School. A FREE dinner will be provided at 5:30 p.m. each session for participating families. The program will run from 6:00-8:00 p.m. on each night!**

***Dates: 9/22, 9/29, 10/6, 10/13, 10/20, 10/27, and 11/3.  
CALL Laurie at (509)218-6559 to Register***

***Sponsored by S.T.O.P. Coalition. For more information about the Strengthening Families Program or S.T.O.P. Coalition, please contact Laurie at 509-218-6559!***

## 2015-2016 HIGH SCHOOL CHARGER FOOTBALL

(practice starts August 19th)

Day	Date	Opponent	Time	Departure Time
Friday	09/04/15	Wilbur / Creston	7:00	2:15
<b>Friday</b>	<b>09/11/15</b>	<b>Ritzville</b>	<b>7:00</b>	<b>n/a</b>
<b>Friday</b>	<b>09/18/15</b>	<b>Liberty</b>	<b>7:00</b>	<b>n/a</b>
Friday	09/25/15	Davenport	7:00	3:45
<b>Friday</b>	<b>10/02/15</b>	<b>Colfax (HOMECOMING)</b>	<b>7:00</b>	<b>n/a</b>
Friday	10/09/15	Reardan	7:00	4:00
Friday	10/16/15	Kettle Falls	7:00	3:30
<i>Friday</i>	<i>10/23/15</i>	<i>NO GAME</i>	<i>n/a</i>	<i>n/a</i>
Friday	10/30/15	NWC	7:00	4:00
Friday	11/06/15	District 9 Cross Over Game	TBA	TBA



## 2015-2016 HIGH SCHOOL CHARGER VOLLEYBALL

(practice starts August 24th)



Day	Date	Opponent	Time	Departure Time
<b>Tuesday</b>	<b>09/08/15</b>	<b>Hunters</b>	<b>5:00</b>	<b>n/a</b>
Thursday	09/10/15	Chewelah	5:00	3:15
Tuesday	09/15/15	Kettle Falls (non-league)	5:00	3:15
Thursday	09/17/15	Wilbur / Creston (non-league) @ Wilbur	5:00	2:30
<b>Tuesday</b>	<b>09/22/15</b>	<b>Wilbur / Creston</b>	<b>5:00</b>	<b>n/a</b>
Thursday	09/24/15	St. Georges	5:00	3:15
<b>Thursday</b>	<b>10/01/15</b>	<b>Wellpinit</b>	<b>5:00</b>	<b>n/a</b>
Saturday	10/03/15	Lind-Ritzville @ Ritzville	Noon	9:00
Tuesday	10/06/15	Liberty	5:00	2:45
<b>Friday</b>	<b>10/09/15</b>	<b>Davenport</b>	<b>5:00</b>	<b>n/a</b>
Tuesday	10/13/15	Reardan	5:00	3:15
<b>Thursday</b>	<b>10/15/15</b>	<b>Colfax</b>	<b>5:00</b>	<b>n/a</b>
Tuesday	10/20/15	NWC	5:00	n/a
<b>Thursday</b>	<b>10/22/15</b>	<b>Kettle Falls</b>	<b>5:00</b>	<b>n/a</b>
Tuesday	10/27/15	Tekoa / Rosalia	5:00	2:15

*\*All sports schedules are subject to change, without notice.*





## 2015-2016 HIGH SCHOOL CHARGER CROSS-COUNTRY

(practice starts TBD)

Day	Date	Opponent	Time	Departure Time
Saturday	09/12/15	Highland Invitational ( <i>Shadle Park</i> )	10:00	7:45
<b>Tuesday</b>	<b>09/15/15</b>	<b>League (HOME)</b>	<b>4:00</b>	<b>n/a</b>
Saturday	09/19/15	Runner's Soul / Erik Anderson Cross Country ( <i>Plantes Ferry</i> )	10:00	7:30
Tuesday	09/22/15	Wellpinit	4:00	1:15
Tuesday	09/29/15	NWC	4:00	2:00
Saturday	10/03/15	Can / Am ( <i>Kettle Falls</i> )	10:00	7:15
Tuesday	10/06/15	Wilbur	4:00	1:45
Saturday	10/10/15	NWC / Audubon Park Inv. ( <i>Spokane</i> )	8:00	10:00
Tuesday	10/13/15	Republic	4:00	1:45
Saturday	10/24/15	District 7 League Championships ( <i>Andobon</i> )	Noon	9:00
Saturday	10/30/15	Regionals ( <i>Plantes Ferry</i> )	Noon	9:00
Saturday	11/07/15	State @ Tri-Cities ( <i>Sun Willow Golf Course</i> )	TBA	TBA

## 2015-2016 MIDDLE SCHOOL 8-MAN FOOTBALL

(practice starts TBD)

Day	Date	Opponent	Time	Departure Time
Thursday	09/17/15	Hunters	4:00	2:00
<b>Thursday</b>	<b>09/24/15</b>	<b>Northport</b>	<b>4:00</b>	<b>n/a</b>
Thursday	10/01/15	Odessa / Harrington @ Harrington	4:00	1:30
<b>Thursday</b>	<b>10/08/15</b>	<b>Kettle Falls</b>	<b>4:00</b>	<b>n/a</b>
Thursday	10/15/15	Republic	4:00	1:00
<b>Tuesday</b>	<b>10/22/15</b>	<b>Wellpinit</b>	<b>4:00</b>	<b>n/a</b>



## 2015-2016 MIDDLE SCHOOL VOLLEYBALL

(practice starts TBD)

Day	Date	Opponent	Time	Departure Time
<b>Thursday</b>	<b>09/17/15</b>	<b>Ritzville</b>	<b>4:00</b>	<b>n/a</b>
Monday	09/21/15	Odessa / Harrington @ Harrington	4:00	1:15
Thursday	09/24/15	Reardan	4:00	2:45
Monday	09/28/15	Wilbur / Creston @ Creston	4:00	1:15
<b>Thursday</b>	<b>10/01/15</b>	<b>Almira-Coulee-Hartline</b>	<b>4:00</b>	<b>n/a</b>
Monday	10/05/15	Davenport	4:00	2:00
<b>Thursday</b>	<b>10/08/15</b>	<b>Liberty</b>	<b>4:00</b>	<b>n/a</b>
Monday	10/12/15	Lind-Ritzville @ Lind	4:00	1:15
<b>Thursday</b>	<b>10/15/15</b>	<b>Odessa / Harrington</b>	<b>4:00</b>	<b>n/a</b>
<b>Monday</b>	<b>10/19/15</b>	<b>Reardan</b>	<b>4:00</b>	<b>n/a</b>

## SUPERINTENDENT'S MESSAGE



August is here and that means we are beginning to seriously “think school”. The first day of classes for students this year will be September 2nd. On behalf of our educational community, it is my pleasure to welcome you to the Mary Walker School District, and to welcome in the 2015-2016 school year.

The Mary Walker School District invites you to be an active partner in the most important function of a democratic society, the education of our nation’s most precious resource, the youth of our community. Our district is committed to the pursuit of excellence. We believe in the potential and promise present in each and every student, and we invite you to become involved in participating in your child’s educational program. The student that realizes his or her family is interested in and supports the school program, will almost always enjoy greater academic and personal success.

Our district continues to develop a history of preparing students for college and career readiness, a readiness that leads to all sorts of post-secondary opportunities for our children. This readiness begins in pre-school and continues through high school. So, come join us — whether you are a returning student or a new student — as we work with you to develop your potential and prepare you for college and a career.

New this year is an Open House *before* school starts. Open House will take place on Thurs., August 27th. We will begin with a dinner (5:00-6:00pm) and transition to our traditional “teacher-in-the-classroom-meeting parents-style” Open House (6:00-7:00pm).

Once again, we encourage anyone who may be interested in being a part of the Mary Walker School District to contact either Jerry Dyar, Matthew Cobb or Donna Hutchinson at the High School, (258-4533); Matthew Cobb or Tammy Ward at the Middle School (258-7357); Edwina Hargrave or Tammy Ward at the Elementary School (258-7357); or Kevin Jacka at the District Office (258-4534).

~ *Kevin Jacka*

MARY WALKER SCHOOL DISTRICT NO. 207  
P.O. Box 159 ~ 500 N. 4th Street  
Springdale, WA 99173-0159

*Kevin Jacka, Superintendent*  
(509) 258-4534

*Matthew Cobb, Principal (6th to 12th)*  
(509) 258-4533

*Edwina Hargrave, Principal (Pre-K to 5th)*  
*& Special Education Director*  
(509) 258-7357

*Jaime Palmer, Director*  
*MWPPP & DEC-MWPPP*  
(509) 258-7342

*John Axtell, Volunteer Director*  
*Springdale Academy*  
(509) 937-2224

Non-Profit  
Organization  
U.S. Postage  
**PAID**  
Permit #1  
Springdale, WA  
ECRWSS

Postal Patron  
Box Holders  
Rural Routes  
General Delivery

